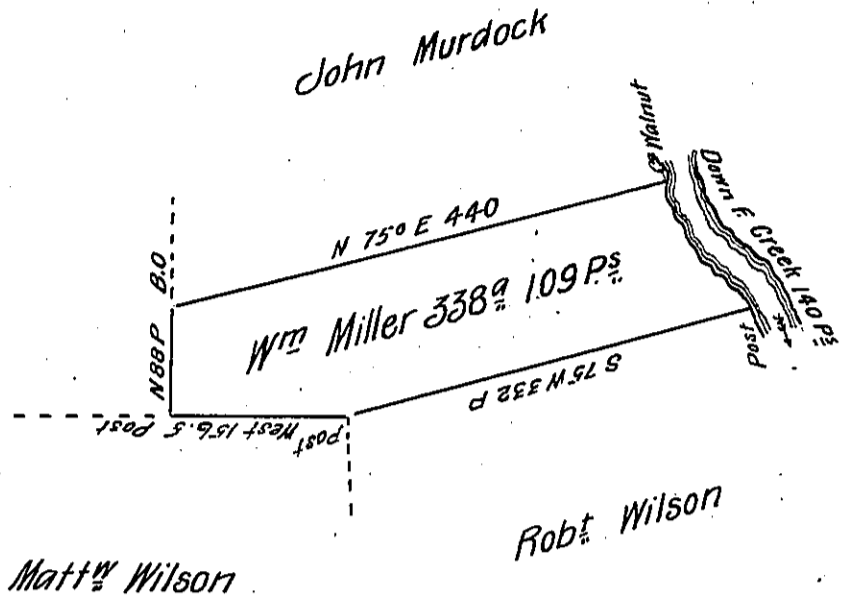


FORM No. 1.

River Courses

S 27° E 25
 S 45° E 32
 S 41° E 70
 S 46° E 13

 140 P^s



Situate on the West side of and adjoining French Creek in Alle^y County

Containing 338^a 109 P^s and allowance of six P. Cent for Roads &c. Surveyed the 5th day of June 1794 in pursuance of a Warrant dated the 13th day of April 1792.

Wm Power Dy. S^r

To Dan^l Brodhead Esq^r
Surveyor General

IN TESTIMONY that the above is a copy of the original remaining on file in the Department of Internal Affairs of Pennsylvania, made conformably to an Act of Assembly approved the 16th day of February, 1833, I have hereunto set my Hand and caused the Seal of said Department to be affixed at Harrisburg, this eight day of December 1905.

George B. Brown
Secretary of Internal Affairs.